

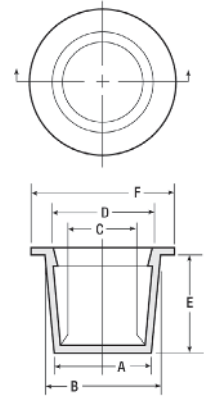
T Series Tapered Caps & Plugs



T Series caps tapered caps and plugs are designed to fit a wide range of applications and protect from contaminants and debris. The easily removable parts may be used for MIL Std, SAE-type, hydraulic, threaded or non-threaded fittings.

Material: Low-Density Polyethylene **Color:** Red
Applicable Specs: NAS 834

Note: Several parts are also stocked in green FlexTemp, a flexible thermoplastic rubber for extreme temperature applications ranging from -90°F to 300°F (-68°C to 149°C).



When PLUGGING
 "B" Dim. must be at least 1% larger than hole to be plugged. Minimum .020!"



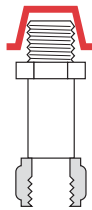
When CAPPING
 "C" Dim. must be at least 1% smaller than diameter to be capped. Minimum .020!"

Note:
 Part numbers shown in red text are also available in FlexTemp (thermoplastic rubber) Green.

Selection Charts - Caps

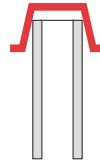
Recommended closures for tube and hydraulic fittings

Caplugs No.	Fitting Size (Dash No.)	Tubing Diameter	To Fit Thread Size
T-2	-2	1/8	5/16 - 24
T-3X	-3	3/16	3/8 - 24
T-4X	-4	1/4	7/16 - 20
T-5	-5	5/16	1/2 - 20
T-6X	-6	3/8	9/16 - 18
T-7	-	3/8	5/8 - 18
T-9X	-8	1/2	3/4 - 16
T-11X	-10	5/8	7/8 - 14
T-13X	-12	3/4	1-1/16 - 12
T-15X	-16	1	1-5/16 - 12
T-18	-20	1-1/4	1-5/8 - 12
T-20	-24	1-1/2	1-7/8 - 12
T-230	-28	1-3/4	2-1/4 - 12
T-250	-32	2	2-1/2 - 12



Recommended closures for unthreaded standard weight pipe (Schedule 40)

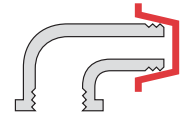
Caplugs No.	Size
T-4	1/8
T-6X	1/4
T-8X	3/8
T-11	1/2
T-13X	3/4
T-16	1
T-18X	1-1/4
T-210	1-1/2
T-240	2
T-45A	2-1/2
T-1050	3
T-1064	3-1/2
T-1072	4
T-1107	6
T-1139	8



Recommended closures for threaded external NPT fittings

Based on average tapped hole fit. It is suggested that sample caps be tried for size before ordering in quantity.

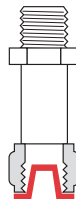
Caplugs No.	Size
T-4	1/8
T-6	1/4
T-8X	3/8
T-11	1/2
T-13X	3/4
T-15X	1
T-18	1-1/4
T-20	1-1/2
T-240	2
T-45A	2-1/2
T-96A	3
T-502	3-1/2
T-1072	4
T-1086	5
T-1103	6



Selection Charts - Plugs

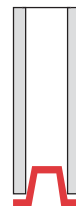
Recommended closures for tube and hydraulic fittings

Caplugs No.	Fitting Size (Dash No.)	Tubing Diameter	To Fit Thread Size
T-1	-2	1/8	5/16 - 24
T-2	-3	3/16	3/8 - 24
T-3	-4	1/4	7/16 - 20
T-4	-5	5/16	1/2 - 20
T-5	-6	3/8	9/16 - 18
T-6	-	3/8	5/8 - 18
T-8	-8	1/2	3/4 - 16
T-10	-10	5/8	7/8 - 14
T-12X	-12	3/4	1-1/16 - 12
T-14X	-16	1	1-5/16 - 12
T-17S	-20	1-1/4	1-5/8 - 12
T-19	-24	1-1/2	1-7/8 - 12
T-221	-28	1-3/4	2-1/4 - 12
T-240	-32	2	2-1/2 - 12



Recommended closures for unthreaded standard weight pipe (Schedule 40)

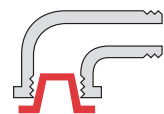
Caplugs No.	Size
T-1	1/8
T-2X	1/4
T-5	3/8
T-7	1/2
T-10	3/4
T-13	1
T-16	1-1/4
T-18	1-1/2
T-220	2
T-250	2-1/2
T-53	3
T-1050	3-1/2
T-1064	4
T-1080	5
T-1097	6
T-1128	8



Recommended closures for threaded internal NPT fittings

Based on average tapped hole fit. It is suggested that sample caps be tried for size before ordering in quantity.

Caplugs No.	Size
T-2X	1/8
T-4	1/4
T-6X	3/8
T-9	1/2
T-12X	3/4
T-14	1
T-17S	1-1/4
T-20S	1-1/2
T-24S	2
T-44	2-1/2
T-501	3
T-502	3-1/2
T-1070	4
T-1086	5
T-1103	6



tapered caps & plugs

Tapered Caps & Plugs T Series

Caplugs No.	Dimensions												Packaging	
	A		B		C		D		E		F		Carton Quantity	Mini Pak Quantity
	In	mm	In	mm	In	mm	In	mm	In	mm	In	mm		
T-00	.116	2.95	.182	4.62	.053	1.35	.120	3.05	.38	9.65	.31	7.87	5000	1000
T-00S	.140	3.56	.180	4.57	.088	2.24	.109	2.77	.22	5.59	.31	7.87	5000	1000
T-00X	.145	3.68	.205	5.21	.079	2.01	.150	3.81	.38	9.65	.41	10.41	5000	1000
T-0	.173	4.39	.240	6.10	.111	2.82	.177	4.50	.38	9.65	.38	9.65	5000	1000
T-0X	.184	4.67	.255	6.48	.113	2.87	.172	4.37	.38	9.65	.38	9.65	5000	1000
T-235V	.209	5.31	.269	6.83	.150	3.81	.210	5.33	.34	8.64	.38	9.65	15000	3000
T-235T	.210	5.33	.275	6.99	.146	3.71	.211	5.36	.31	7.87	.45	11.43	10000	2000
T-1	.236	5.99	.302	7.67	.174	4.42	.240	6.10	.38	9.65	.44	11.18	5000	1000
T-1X	.267	6.78	.335	8.51	.205	5.21	.273	6.93	.38	9.65	.47	11.94	5000	1000
T-2	.299	7.59	.365	9.27	.235	5.97	.302	7.67	.38	9.65	.50	12.70	5000	1000
T-2S	.325	8.26	.367	9.32	.263	6.68	.305	7.75	.19	4.83	.50	12.70	5000	1000
T-2X	.330	8.38	.396	10.06	.267	6.78	.333	8.46	.38	9.65	.53	13.46	5000	1000
T-3	.361	9.17	.427	10.85	.298	7.57	.365	9.27	.38	9.65	.56	14.22	5000	1000
T-3X	.390	9.91	.456	11.58	.327	8.31	.394	10.01	.38	9.65	.59	14.99	5000	1000
T-4	.419	10.64	.485	12.32	.356	9.04	.422	10.72	.38	9.65	.63	16.00	5000	1000
T-4X	.447	11.35	.513	13.03	.385	9.78	.451	11.46	.38	9.65	.66	16.76	5000	1000
T-5	.471	11.96	.547	13.89	.409	10.39	.485	12.32	.44	11.18	.69	17.53	5000	1000
T-189C	.477	12.12	.547	13.89	.415	10.54	.485	12.32	.28	7.11	.69	17.53	7500	1500
T-5X	.500	12.70	.576	14.63	.440	11.18	.516	13.11	.44	11.18	.72	18.29	5000	1000
T-5S	.533	13.54	.562	14.28	.477	12.12	.506	12.85	.22	5.59	.68	17.27	5000	1000
T-6	.532	13.51	.608	15.44	.468	11.89	.545	13.84	.44	11.18	.75	19.05	5000	1000
T-6X	.550	13.97	.631	16.03	.487	12.37	.568	14.43	.47	11.94	.75	19.05	5000	1000
T-6S	.554	14.07	.612	15.55	.490	12.45	.551	14.00	.31	7.87	.75	19.05	5000	1000
T-7	.580	14.73	.667	16.94	.518	13.16	.605	15.37	.50	12.70	.81	20.57	5000	1000
T-7X	.610	15.49	.695	17.65	.549	13.95	.634	16.10	.50	12.70	.84	21.34	5000	1000
T-8	.640	16.26	.727	18.47	.578	14.68	.664	16.87	.50	12.70	.88	22.35	5000	1000
T-8S	.669	16.99	.694	17.63	.613	15.57	.638	16.21	.19	4.83	.75	19.05	5000	1000
T-8X	.675	17.15	.755	19.18	.613	15.57	.693	17.60	.50	12.70	.88	22.35	5000	1000
T-9	.690	17.53	.788	20.02	.628	15.95	.726	18.44	.56	14.22	.94	23.88	5000	1000
T-9X	.725	18.42	.823	20.91	.663	16.84	.761	19.33	.56	14.22	.97	24.64	5000	1000
T-9S	.740	18.80	.765	19.43	.678	17.22	.703	17.86	.19	4.83	.88	22.35	5000	1000
T-710	.750	19.05	.805	20.45	.688	17.48	.743	18.87	.16	4.06	.86	21.84	7500	1500
T-10	.750	19.05	.848	21.54	.687	17.45	.785	19.94	.56	14.22	1.00	25.40	5000	1000
T-10S	.748	19.00	.848	21.54	.687	17.45	.775	19.69	.39	9.91	1.02	25.91	5000	1000
T-11	.802	20.37	.911	23.14	.740	18.80	.849	21.56	.63	16.00	1.06	26.93	5000	1000
T-11X	.815	20.70	.930	23.62	.753	19.13	.868	22.05	.63	16.00	1.09	27.69	5000	1000
T-15A	.836	21.24	1.305	33.15	.777	19.74	1.247	31.68	1.06	26.93	1.43	36.32	2500	500
T-11S	.837	21.26	.890	22.61	.757	19.23	.810	20.57	.22	5.59	1.05	26.67	5000	1000
T-192-2-C	.854	21.69	.958	24.33	.790	20.07	.894	22.71	.63	16.00	1.13	28.70	2500	500
T-12	.866	22.00	.975	24.77	.803	20.40	.912	23.16	.63	16.00	1.13	28.70	5000	1000
T-192-1	.869	22.07	.973	24.71	.805	20.45	.909	23.09	.72	18.29	1.13	28.70	2500	500
T-12X	.915	23.24	1.040	26.42	.855	21.72	.980	24.89	.69	17.53	1.16	29.47	5000	1000
T-249-2	.950	24.13	1.090	27.69	.890	22.61	1.030	26.16	1.00	25.40	1.25	31.75	1500	300
T-277	.955	24.26	1.040	26.42	.895	22.73	.980	24.89	.47	11.94	1.16	29.46	3500	700
T-13A	.960	24.38	1.047	26.59	.900	22.86	.987	25.07	.50	12.70	1.19	30.23	5000	1000
T-13	.964	24.49	1.090	27.69	.901	22.89	1.027	26.09	.75	19.05	1.25	31.75	2500	500
T-249-W	.975	24.77	1.104	28.04	.918	23.32	1.047	26.59	.72	18.29	1.44	36.58	2000	400
T-13X	.995	25.27	1.145	29.08	.933	23.70	1.083	27.51	.75	19.05	1.31	33.28	2500	500
T-709	1.020	25.91	1.040	26.42	.940	23.88	.960	24.38	.84	21.34	1.31	33.27	1500	300
T-14	1.094	27.79	1.215	30.86	1.031	26.19	1.152	29.26	.75	19.05	1.41	35.82	2500	500
T-16A	1.140	28.96	1.420	36.07	1.085	27.56	1.358	34.49	.81	20.57	1.56	39.63	2500	500
T-14X	1.175	29.85	1.284	32.61	1.113	28.27	1.222	31.04	.63	16.00	1.44	36.58	2500	500
T-250SW	1.175	29.85	1.284	32.61	1.113	28.27	1.222	31.04	.63	16.00	1.67	42.42	2000	400
T-250-NIA	1.179	29.95	1.286	32.66	1.115	28.32	1.222	31.04	.72	18.29	1.44	36.58	1500	300
T-15	1.224	31.09	1.355	34.42	1.161	29.49	1.292	32.82	.75	19.05	1.50	38.10	2500	500
T-15X	1.235	31.37	1.360	34.55	1.173	29.80	1.298	32.97	.81	20.57	1.50	38.10	2500	500
T-17A	1.239	31.47	1.507	38.28	1.169	29.69	1.437	36.50	.75	19.05	1.63	41.40	2500	500
T-1153	1.276	32.41	1.312	33.32	1.155	29.32	1.190	32.23	.50	12.70	1.38	35.05	2000	400

T Series Tapered Caps & Plugs (cont.)

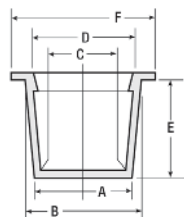
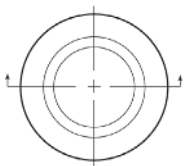
Caplugs No.	Dimensions												Packaging	
	A		B		C		D		E		F		Carton Quantity	Mini Pak Quantity
	In	mm	In	mm	In	mm	In	mm	In	mm	In	mm		
T-15S	1.285	32.64	1.346	34.19	1.227	31.17	1.288	32.72	.38	9.65	1.47	37.34	5000	1000
T-252	1.292	32.82	1.356	34.44	1.231	31.27	1.295	32.89	.72	18.29	1.50	38.10	1500	330
T-16	1.312	33.33	1.465	37.21	1.249	31.72	1.402	35.61	.88	22.35	1.63	41.40	2500	500
T-253	1.312	33.32	1.465	37.21	1.248	31.70	1.401	35.59	.72	18.29	1.62	41.15	1500	300
T-253-2	1.344	34.14	1.507	38.28	1.282	32.56	1.445	36.70	.91	23.11	1.77	44.96	1000	200
T-253-S	1.350	34.29	1.465	37.21	1.286	32.66	1.401	35.59	.50	12.70	1.62	41.15	2000	400
T-16S	1.395	35.43	1.465	37.21	1.345	34.16	1.405	35.69	.39	9.91	1.59	40.39	1000	200
T-727	1.435	36.45	1.500	38.10	1.340	34.04	1.420	36.07	.75	19.05	1.75	44.45	1000	200
T-20A	1.440	36.58	1.895	48.13	1.378	35.00	1.833	46.56	1.28	32.51	2.06	52.33	1000	200
T-17	1.447	36.76	1.600	40.64	1.384	35.15	1.537	39.04	.88	22.35	1.75	44.45	1000	200
T-254S	1.447	36.75	1.600	40.64	1.384	35.15	1.537	39.04	.88	22.35	1.75	44.45	1000	200
T-254	1.451	36.86	1.601	40.67	1.387	35.23	1.537	39.04	.72	18.29	1.75	44.45	1000	200
T-17S	1.513	38.43	1.600	40.64	1.451	36.86	1.537	39.04	.50	12.70	1.75	44.45	2500	500
T-194	1.519	38.58	1.602	40.69	1.455	36.96	1.538	39.07	.72	18.29	1.75	44.45	1800	360
T-18	1.560	39.63	1.682	42.72	1.498	38.05	1.620	41.15	.75	19.05	1.88	47.75	1000	200
T-195-S	1.574	39.98	1.688	42.88	1.514	38.46	1.628	41.35	.62	15.75	1.88	47.75	5000	1000
T-18X	1.630	41.40	1.750	44.45	1.568	39.83	1.688	42.88	.75	19.05	1.94	49.28	1000	200
T-255	1.633	41.48	1.750	44.45	1.569	39.85	1.690	42.93	.69	17.53	1.84	46.74	1000	200
T-1972	1.720	43.69	1.850	46.99	1.664	42.27	1.794	45.57	.72	18.29	2.03	51.56	3500	700
T-21A	1.738	44.15	2.163	54.94	1.668	42.37	2.093	53.16	1.18	29.97	2.31	58.68	1000	200
T-19	1.750	44.45	1.880	47.75	1.688	42.88	1.818	46.18	.75	19.05	2.00	50.80	1000	200
T-20	1.780	45.21	1.950	49.53	1.718	43.64	1.888	47.96	1.00	25.40	2.13	54.10	1000	200
T-20S	1.781	45.24	1.805	45.85	1.722	43.74	1.746	44.35	.38	9.65	2.00	50.80	1000	200
T-206	1.807	45.90	1.938	49.23	1.743	44.27	1.874	47.60	.97	24.64	2.16	54.86	1000	200
T-210	1.844	46.84	2.000	50.80	1.781	45.24	1.938	49.23	1.00	25.40	2.13	54.10	1000	200
T-911	1.865	47.37	1.975	50.17	1.785	45.34	1.895	48.13	.63	16.00	2.38	60.45	2500	500
T-21	1.900	48.26	2.076	52.73	1.837	46.66	2.013	51.13	1.00	25.40	2.25	57.15	1000	200
T-22A	1.935	49.15	2.310	58.68	1.875	47.63	2.255	57.28	.85	21.59	2.47	62.74	1000	200
T-806	1.950	49.53	2.065	52.45	1.885	47.88	2.000	50.80	.72	18.29	2.20	55.88	2500	500
T-220	1.975	50.17	2.132	54.15	1.913	48.59	2.070	52.58	1.00	25.40	2.25	57.15	1000	200
T-22S	2.015	51.18	2.147	54.54	1.953	49.61	2.085	52.96	.75	19.05	2.31	58.68	1000	200
T-258-S	2.020	51.31	2.100	53.34	2.060	52.32	2.140	54.36	.38	9.65	2.59	65.79	1000	200
T-221	2.067	52.50	2.243	56.97	2.005	50.93	2.181	55.40	1.00	25.40	2.44	61.98	1000	200
T-25A	2.125	53.98	2.406	61.11	2.063	52.40	2.344	59.54	1.00	25.40	2.53	64.26	1000	200
T-230	2.136	54.26	2.312	58.73	2.074	52.68	2.250	57.15	1.00	25.40	2.56	65.03	1000	200
T-24S	2.230	56.64	2.260	57.41	2.168	55.07	2.198	55.83	.50	12.70	2.50	63.50	1000	200
T-1230	2.280	57.91	2.400	60.96	2.216	56.29	2.336	59.33	.72	18.29	2.80	71.12	1500	300
T-240	2.298	58.37	2.464	62.59	2.235	56.77	2.401	60.99	1.00	25.40	2.63	66.80	500	100
T-708	2.300	58.42	2.464	62.59	2.220	56.39	2.383	60.53	.71	18.03	2.66	67.56	2000	400
T-33A	2.307	58.60	2.650	67.31	2.245	57.03	2.588	65.74	1.25	31.75	2.78	70.61	500	100
T-265	2.311	58.70	2.650	67.31	2.247	57.07	2.586	65.68	.96	24.38	2.78	70.61	500	100
T-250	2.395	60.84	2.602	66.09	2.333	59.26	2.540	64.52	1.03	26.16	2.81	71.38	500	100
T-263	2.396	60.86	2.604	66.14	2.332	59.23	2.540	64.52	1.13	28.70	2.81	71.37	500	100
T-43A	2.457	62.41	2.750	69.85	2.395	60.84	2.688	68.28	1.00	25.40	2.88	73.15	500	100
T-33A1	2.480	62.99	2.644	67.16	2.418	61.42	2.582	65.59	.63	16.00	2.78	70.61	1000	200
T-43X	2.555	64.90	2.690	68.33	2.493	63.32	2.628	66.75	.63	16.00	2.88	73.15	1000	200
T-267	2.561	65.05	2.690	68.33	2.497	63.42	2.626	66.70	.72	18.29	2.88	73.15	500	100
T-44	2.641	67.08	2.790	70.87	2.579	65.51	2.728	69.29	.75	19.05	2.94	74.68	500	100
T-2156	2.655	67.44	2.788	70.82	2.595	65.91	2.728	69.29	.47	11.94	2.97	75.44	1000	200
T-862	2.706	68.73	2.870	72.90	2.626	66.70	2.790	70.87	.71	18.03	3.06	77.72	500	100
T-208	2.720	69.09	2.990	75.95	2.656	67.46	2.926	74.32	1.00	25.40	3.13	79.50	500	100
T-45A	2.760	70.11	2.990	75.95	2.685	68.20	2.947	74.86	1.00	25.40	3.13	79.51	500	100
T-500	2.849	72.37	2.980	75.69	2.787	70.79	2.918	74.12	.75	19.05	3.25	82.55	500	100
T-53	2.975	75.57	3.103	78.82	2.915	74.04	3.041	77.24	.75	19.05	3.34	84.84	500	100
T-55A	2.982	75.75	3.245	82.43	2.912	73.97	3.175	80.65	1.00	25.40	3.38	85.86	500	100
T-228	2.996	76.10	3.159	80.24	2.916	74.07	3.079	78.21	.47	11.94	3.41	86.61	500	100
T-57A	3.090	78.49	3.370	85.60	3.020	76.71	3.300	83.82	1.00	25.40	3.50	88.90	500	100
T-57B	3.070	77.98	3.211	81.56	3.019	76.68	3.156	80.16	.79	20.07	3.50	88.90	500	100

tapered caps & plugs

Tapered Caps & Plugs (cont.) T Series

† T-1108X and T-390X have (2) vent holes

Caplugs No.	Dimensions												Packaging	
	A		B		C		D		E		F		Carton Quantity	Mini Pak Quantity
	In	mm	In	mm	In	mm	In	mm	In	mm	In	mm		
T-96A	3.270	83.06	3.562	90.48	3.200	81.28	3.492	88.70	1.13	28.70	3.69	93.73	250	50
T-501	3.325	84.46	3.457	87.81	3.245	82.43	3.377	85.78	.75	19.05	3.63	92.21	250	50
T-1050	3.470	88.14	3.600	91.44	3.410	86.62	3.540	89.92	.75	19.05	3.88	98.56	500	100
T-1051	3.550	90.17	3.730	94.75	3.480	88.40	3.660	92.97	1.00	25.40	4.00	101.60	250	50
T-1052	3.680	93.48	3.800	96.52	3.610	91.70	3.730	94.75	.75	19.05	4.00	101.60	250	50
T-502	3.790	96.27	3.920	99.57	3.710	94.24	3.840	97.54	.75	19.05	4.12	104.65	250	50
T-1063	3.930	99.83	4.070	103.38	3.860	98.05	4.000	101.60	.75	19.05	4.38	111.26	250	50
T-1064	4.020	102.11	4.140	105.16	3.940	100.08	4.070	103.38	.75	19.05	4.53	115.07	250	50
T-1067	4.090	103.89	4.320	109.73	4.010	101.86	4.240	107.70	1.25	31.75	4.62	117.35	250	50
T-406	4.214	107.04	4.459	113.26	4.134	105.00	4.379	111.23	.96	24.38	4.94	125.48	400	80
T-1070	4.270	108.46	4.430	112.53	4.180	106.18	4.340	110.24	.88	22.35	4.88	123.96	250	50
T-1072	4.370	111.00	4.620	117.35	4.290	108.97	4.540	115.32	1.00	25.40	5.00	127.01	250	50
T-1076	4.640	117.86	4.850	123.19	4.570	116.08	4.780	121.42	.88	22.35	5.25	133.36	250	50
T-1078	4.790	121.67	4.970	126.24	4.710	119.64	4.890	124.21	1.00	25.40	5.38	136.66	250	50
T-1079	4.910	124.72	5.090	129.29	4.830	122.69	5.010	127.26	1.00	25.40	5.50	139.71	250	50
T-407	4.980	126.49	5.100	129.54	4.900	124.46	5.020	127.51	.68	17.27	5.44	138.18	450	90
T-1080	4.990	126.75	5.200	132.09	4.920	124.97	5.100	129.55	1.00	25.40	5.63	143.01	250	50
T-1084	5.180	131.58	5.360	136.15	5.110	129.80	5.290	134.37	1.00	25.40	5.88	149.36	250	50
T-1086	5.330	135.39	5.490	139.45	5.210	132.34	5.370	136.40	.88	22.35	5.88	149.36	250	50
T-1088	5.470	138.94	5.620	142.75	5.390	136.91	5.540	140.72	1.00	25.40	6.13	155.71	250	50
T-1090	5.570	141.48	5.750	146.06	5.490	139.45	5.670	144.02	1.00	25.40	6.19	157.23	250	50
T-1092	5.700	144.79	5.870	149.10	5.610	142.50	5.790	147.07	.98	24.89	6.25	158.76	250	50
T-1097	6.010	152.66	6.180	156.98	5.920	150.37	6.100	154.95	1.00	25.40	6.62	168.15	250	50
T-1100	6.180	156.98	6.350	161.30	6.090	154.69	6.260	159.01	1.00	25.40	6.75	171.46	100	20
T-1103	6.400	162.57	6.560	166.63	6.330	160.79	6.490	164.85	.87	22.10	6.94	176.28	100	20
T-1107	6.610	167.90	6.710	170.44	6.530	165.87	6.630	168.41	1.50	38.10	7.19	182.63	100	20
T-365	6.668	169.37	6.774	172.06	6.562	166.67	6.668	169.37	1.50	38.10	7.19	182.63	100	20
T-1108S	6.880	174.75	7.030	178.56	6.800	172.72	6.950	176.53	.50	12.70	7.67	194.82	100	20
T-1108X †	6.943	176.22	7.358	186.75	6.851	173.88	7.264	184.37	1.52	37.08	7.72	195.94	80	16
T-1109	7.050	179.08	7.120	180.86	6.970	177.04	7.060	179.33	1.00	25.40	7.63	193.81	100	20
T-1110	7.340	186.44	7.650	194.32	7.260	184.41	7.560	192.03	1.00	25.40	7.94	201.68	100	20
T-1120	7.660	194.57	7.840	199.14	7.580	192.54	7.760	197.11	1.00	25.40	8.12	206.26	100	20
T-1128	7.970	202.45	8.140	206.76	7.880	200.16	8.050	204.48	1.00	25.40	8.38	212.86	100	20
T-1133	8.150	207.02	8.350	212.10	8.050	204.48	8.250	209.56	1.38	35.05	8.75	222.26	50	10
T-1137	8.400	213.37	8.600	218.45	8.300	210.83	8.500	215.91	1.38	35.05	9.00	228.61	50	10
T-1139	8.670	220.23	8.730	221.75	8.550	217.18	8.600	218.45	1.50	38.10	9.13	231.91	50	10
T-1142	9.060	230.12	9.364	237.85	8.890	225.81	9.240	234.70	1.75	44.45	9.86	250.44	50	10
T-390	9.970	253.24	10.220	259.59	9.820	249.43	10.080	256.03	.97	24.64	10.56	268.22	75	15
T-390X †	9.950	252.73	10.290	261.366	9.770	248.16	10.170	258.32	1.50	38.10	10.56	268.22	60	-
T-1143	10.790	274.07	11.098	281.89	10.620	269.75	10.910	277.11	1.75	44.45	11.60	294.64	40	8
T-1146	11.110	282.19	11.455	290.96	10.779	273.79	11.366	288.70	2.00	50.80	11.96	303.78	40	8
T-1314	12.790	324.87	13.138	333.71	12.480	316.99	12.923	328.24	2.00	50.80	13.64	346.46	30	6
T-1360	13.250	336.55	13.597	345.36	12.960	329.18	13.177	334.70	2.00	50.80	14.10	358.14	30	6



When PLUGGING
"B" Dim. must be at least 1% larger than hole to be plugged. Minimum .020!"



When CAPPING
"C" Dim. must be at least 1% smaller than diameter to be capped. Minimum .020!"

Note:
Part numbers shown in red text are also available in FlexTemp (thermoplastic rubber) Green.